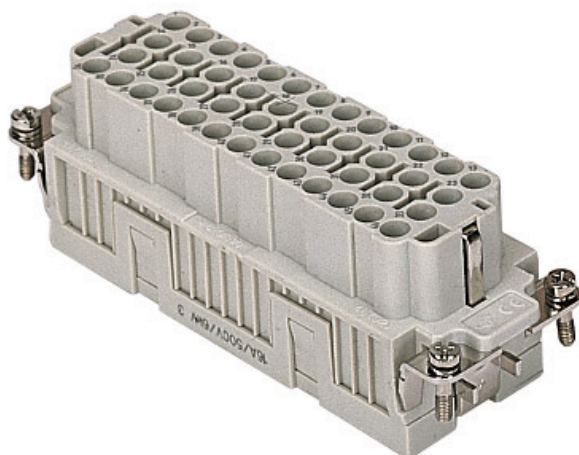



Product Sheet

Part Number: CQEF 46 N



Family	inserts
Version	crimp connections
Series	CQE
Product type	for female contacts 16A
Model	female insert
Reference standard	EN 61984 (2001-11)
No. of poles	92 poles + \perp (46 poles + \perp , No. 47 - 92)
Voltage (V)	500V
Current (A)	16A (A.C./D.C.)
Quality mark	
IP degree of protection	IP20 degree of protection without enclosure, IP65/IP66 with enclosure (EN 60529)
Fixing centre distance	size "104.62" Double-size enclosures 104.62 accept two complementary inserts, order the standard insert and corresponding N insert for making the total polarity
Impulse withstand voltage	6kV

The information and the dimensions contained are not binding and may be changed without prior notice.
The drawing's dimensions are in mm.

Pollution degree

3

Notes



CQEF/M 46 N inserts:

- characteristics according to EN 61984:
 - (16A 500V 6kV 3)
 - (16A 830V) 8kV 2)
- rated voltage according to UL/CSA: 600V
- insulation resistance: > 10 GOhm
- ambient temperature limit: -40 °C ... +125 °C
- are made of self-extinguishing thermoplastic resin
UL 94 V0
- mechanical life: > 500 cycles
- contact resistance: < 1 mOhm
- for contact crimping instructions, please see the crimping tool section (16A contacts, CCF, CCM and CC...AN series) .
- enclosures: size "104.62":
 - C-TYPE IP65/IP66
 - C7 IP67 stainless steel lever
 - V-TYPE IP65/IP66
stainless steel lever
 - T-TYPE IP65 insulating
 - JEI zinc-plated steel lever
 - BIG hoods
 - W-TYPE aggressive environments
 - EMC
central lever
 - IP68
- panel supports: page: COB

The information and the dimensions contained are not binding and may be changed without prior notice.
The drawing's dimensions are in mm.